

signi[®]
Corporate Identity

ALUMINIUM COMPOSITE PANEL

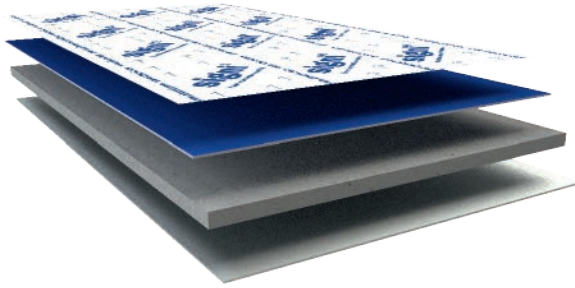
Transform Ideas into Reality

Corporate Identity
Decoration
Signs
Displays
Furniture
Stands fairs



Alucoil[®]

Grupo Alibérico



ALUMINIUM COMPOSITE PANEL

- PROTECTIVE FILM
- ALUMINIUM
- FR/PE CORE
- ALUMINIUM



COATED SURFACE Possibilities
a) Polyester 25µ
b) HDP 35µ
Finishes
Solid - Metallic
Textured - Design

ALUMINIUM COMPOSITE PANEL

This panel has been developed to satisfy the growing demand in the fields of **corporate identity, signage, display, interiors, furniture, false ceilings**, and other applications. Many firms from diverse business fields have relied their corporate identity to **signi**[®] products. Due to different end uses for the product, **Alucoil**[®] offers two panel thicknesses, 3 and 4mm, with aluminum thickness sheets of 0,3 mm.



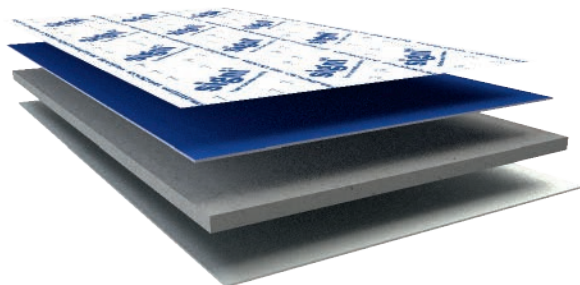
PANEL FEATURES	signi [®] FR/PE 303	signi [®] FR/PE 403
Panel thickness	3 (mm)	4 (mm)
Aluminium thickness	0,3 (mm)	0,3 (mm)
Standard width	1250 - 1500 - 2000 (mm)	1250 - 1500 - 2000 (mm)
Min / max length	2000 - 8000 (mm)	2000 - 8000 (mm)
Core	Mineral FR PE Polyethylene	Mineral FR PE Polyethylene
Reaction to fire test	FR: B-s2,d0 ⁽¹⁾ EN 13501-1 PE: E ⁽²⁾ EN 13501-1	FR: B-s2,d0 ⁽¹⁾ EN 13501-1 PE: E ⁽²⁾ EN 13501-1
Panel weight	FR: 5,72 (kg/m ²) PE: 3,94 (kg/m ²)	FR: 7,36 (kg/m ²) PE: 4,84 (kg/m ²)
Moment of inertia "I"	FR: 1298 ⁽³⁾ (mm ⁴ /m) PE: 1117 ⁽³⁾ (mm ⁴ /m)	FR: 2017 (mm ⁴ /m) PE: 1801 (mm ⁴ /m)
Rigidity "EI"	FR: 909 ⁽³⁾ (kNcm ² /m) PE: 782 ⁽³⁾ (kNcm ² /m)	FR: 1475 (kNcm ² /m) PE: 1261 (kNcm ² /m)
Section Modulus "W"	FR: 866 ⁽³⁾ (mm ³ /m) PE: 744 ⁽³⁾ (mm ³ /m)	FR: 1054 (mm ³ /m) PE: 901 (mm ³ /m)

⁽¹⁾ Material not specifically tested, same FR core formulation as **signi**[®] FR 302 (FR core 2,6mm thick). ⁽²⁾ Material not specifically tested, same PE core formulation as **larson**[®] PE 405 (PE core 3mm thick). ⁽³⁾ Estimated values while lab results arrive.

ALUMINIUM FEATURES

Aluminium alloy	Serie 3000 EN 573-3
Modulus of elasticity "E"	70000 (N/mm ²)
Aluminium thermal expansion	2,3 mm/m Δ100°C
Ultimate tensile strength "R _m "	>130 (N/mm ²)
Elasticity limit "R _{p0,2} "	>80 (N/mm ²)
Elongation "A"	>1 (%)

PANNEAUX COMPOSITE EN ALUMINIUM



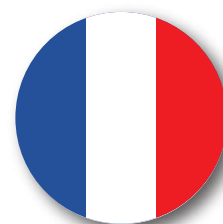
FILM PROTECTEUR
ALUMINIUM
NOYAU FR/PE
ALUMINIUM



SURFACE LAQUÉE
Possibilities
a) Polyester 25µ
b) HDP 35µ
Finitions
Solid - Metallic
Textured - Design

PANNEAUX COMPOSITES ALUMINIUM

Ce panneau a été développé pour satisfaire la demande croissante dans Les domaines tels que la signalétique, l'affichage urbain, la décoration d'intérieur, l'ameublement, les faux plafonds et bien d'autres. De nombreuses marques ont accordées leurs confiances et associées leurs images aux panneaux **signi®**. Pour satisfaire ces besoins, **Alucoil®** propose deux épaisseurs de panneaux en 3 et 4mm avec des peaux d'aluminium de 0,3mm.



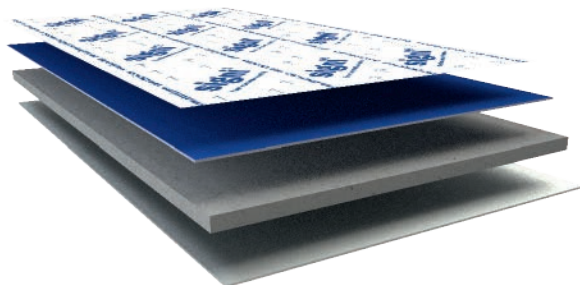
DONNÉES TECHNIQUES	signi® FR/PE 303	signi® FR/PE 403
Épaisseur totale	3 (mm)	4 (mm)
Épaisseur du métal	0,3 (mm)	0,3 (mm)
Largeur standard	1250 - 1500 - 2000 (mm)	1250 - 1500 - 2000 (mm)
Longueur min / max	2000 - 8000 (mm)	2000 - 8000 (mm)
Noyau	Mineral FR PE Polyethylene	Mineral FR PE Polyethylene
Classement au feu	FR: B-s2,d0⁽¹⁾ EN 13501-1 PE: E⁽²⁾ EN 13501-1	FR: B-s2,d0⁽¹⁾ EN 13501-1 PE: E⁽²⁾ EN 13501-1
Poids du panneau	FR: 5,72 (kg/m²) PE: 3,94 (kg/m²)	FR: 7,36 (kg/m²) PE: 4,84 (kg/m²)
Moment d'inertie "I"	FR: 1298⁽³⁾ (mm⁴/m) PE: 1117⁽³⁾ (mm⁴/m)	FR: 2017 (mm⁴/m) PE: 1801 (mm⁴/m)
Rigidité "EI"	FR: 909⁽³⁾ (kNcm²/m) PE: 782⁽³⁾ (kNcm²/m)	FR: 1475 (kNcm²/m) PE: 1261 (kNcm²/m)
Section Modulus "W"	FR: 866⁽³⁾ (mm³/m) PE: 744⁽³⁾ (mm³/m)	FR: 1054 (mm³/m) PE: 901 (mm³/m)

⁽¹⁾ Material not specifically tested, same FR core formulation as **signi® FR 302** (FR core 2,6mm thick). ⁽²⁾ Material not specifically tested, same PE core formulation as **larson® PE 405** (PE core 3mm thick). ⁽³⁾ Estimated values while lab results arrive.

ALUMINIUM FEATURES

Alliage	Serie 3000 EN 573-3
Module d'élasticité "E"	70000 (N/mm ²)
Dilatation de l'aluminium	2,3 mm/m Δ100°C
Charge de rupture "R _m "	>130 (N/mm ²)
Limite d'élasticité "R _{p0,2} "	>80 (N/mm ²)
Allongement à la rupture "A"	>1 (%)

PANEL COMPOSITE DE ALUMINIO



FILM PROTECTOR
ALUMINIO
NÚCLEO FR/PE
ALUMINIO



SUPERFICIE LACADA
Posibilidades
a) Poliester 25μ
b) HDP 35μ
Finishes
Solid - Metallic
Textured - Design

PANEL COMPOSITE DE ALUMINIO

Surge para atender la creciente demanda en los ámbitos de la **imagen corporativa, publicidad, rotulación, interiorismo, mobiliario, decoración y falsos techos**. Numerosas firmas de los sectores más diversos, han confiado el desarrollo de su imagen corporativa a los productos **signi**[®]. Debido a los distintos usos de este producto, se ofrece la posibilidad de suministro en espesores de 3 y 4 mm, con láminas de aluminio de 0,3 mm de espesor.



PROPIEDADES DEL PANEL	signi [®] FR/PE 303	signi [®] FR/PE 403
Espesor del panel	3 (mm)	4 (mm)
Espesor del aluminio	0,3 (mm)	0,3 (mm)
Ancho estándar	1250 - 1500 - 2000 (mm)	1250 - 1500 - 2000 (mm)
Longitud mín / máx	2000 - 8000 (mm)	2000 - 8000 (mm)
Núcleo	Mineral FR PE Polyethylene	Mineral FR PE Polyethylene
Clasificación al fuego	FR: B-s2,d0 ⁽¹⁾ EN 13501-1 PE: E ⁽²⁾ EN 13501-1	FR: B-s2,d0 ⁽¹⁾ EN 13501-1 PE: E ⁽²⁾ EN 13501-1
Peso del panel	FR: 5,72 (kg/m ²) PE: 3,94 (kg/m ²)	FR: 7,36 (kg/m ²) PE: 4,84 (kg/m ²)
Momento de inercia "I"	FR: 1298 ⁽³⁾ (mm ⁴ /m) PE: 1117 ⁽³⁾ (mm ⁴ /m)	FR: 2017 (mm ⁴ /m) PE: 1801 (mm ⁴ /m)
Rigidez "EI"	FR: 909 ⁽³⁾ (kNcm ² /m) PE: 782 ⁽³⁾ (kNcm ² /m)	FR: 1475 (kNcm ² /m) PE: 1261 (kNcm ² /m)
Módulo resistente "W"	FR: 866 ⁽³⁾ (mm ³ /m) PE: 744 ⁽³⁾ (mm ³ /m)	FR: 1054 (mm ³ /m) PE: 901 (mm ³ /m)

⁽¹⁾ Producto no específicamente testado, misma composición de núcleo FR que **signi**[®] FR 302 (2,6 mm de núcleo FR). ⁽²⁾ Producto no específicamente testado, misma composición de núcleo PE que **larson**[®] PE 405 (3 mm de núcleo PE). ⁽³⁾ Valores estimados a la espera de recibir los resultados de los laboratorios.

ALUMINIUM FEATURES

Aleación del aluminio	Serie 3000 EN 573-3
Módulo de elasticidad "E"	70000 (N/mm ²)
Dilatación del aluminio	2,3 mm/m Δ100°C
Carga a la rotura "R _m "	>130 (N/mm ²)
Límite de elasticidad "R _{p0,2} "	>80 (N/mm ²)
Alargamiento a la rotura "A"	>1 (%)

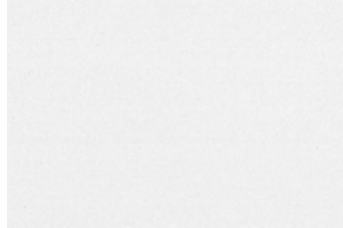


COLOUR CHART CID COLOURS

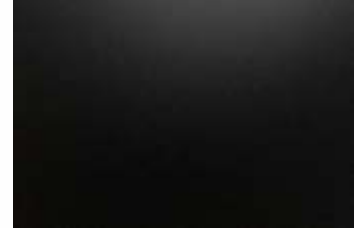
MATT and GLOSS finishes



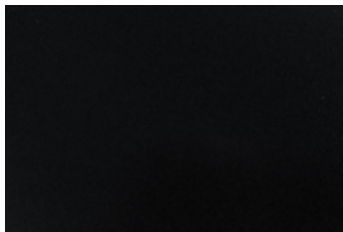
PURE WHITE MCD
(ES2103)



WHITE METALLIC
(ES2133)



JET BLACK 9005
(ES1425)



BLACK MAZDA
(ES2127)



BLUE REPSOL
(ES1638)



BLUE SIGNAL 5005
(ES2120)



YELLOW RENAULT
(ES2175)



RED CEPESA
(ES1590)



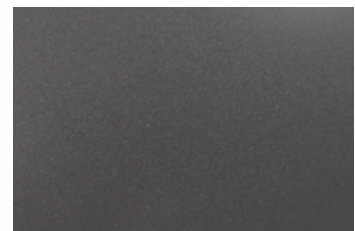
BROWN CHESTNUT 8015
(ES2045)



PURE ORANGE 2004
(ES1423)



BROWN CLAY MCD
(ES2105)



GREY METALLIC
(ES2156)



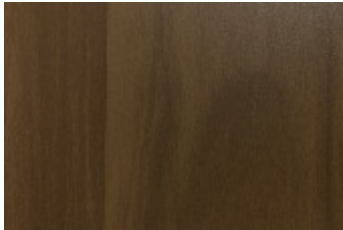
DARK GREY METALLIC
(ES2134)



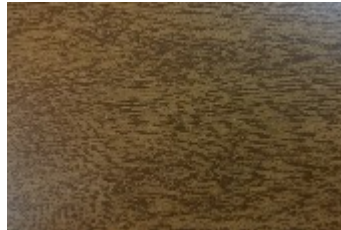
SILVER TOYOTA
(ES2177)



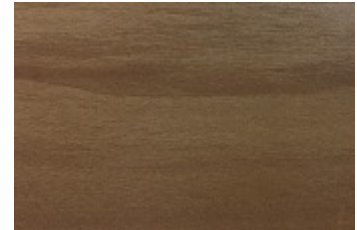
SILVER ANODIC
(ES2141)



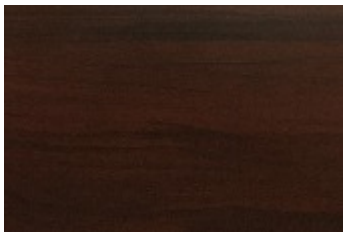
DESIGN WOOD ITALIAN WALNUT MCD
(ES2104)



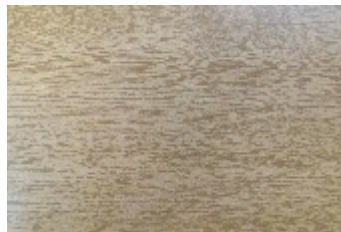
DESIGN WOOD GOLDEN OAK
(ES2161)



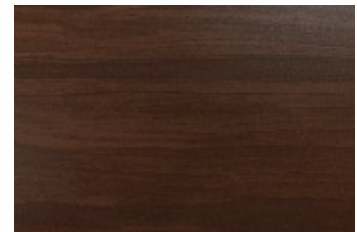
DESIGN WOOD WALNUT BROWN
(ES2159)



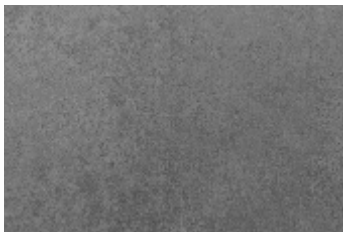
DESIGN WOOD MAHOGANY BROWN
(ES2154)



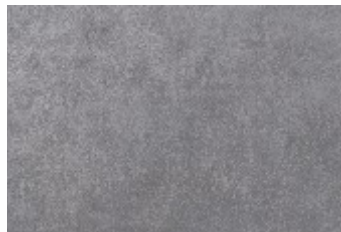
DESIGN WOOD PALE OAK
(ES2151)



DESIGN WOOD COLONIAL RED
(ES2160)



DESIGN INDUSTRIAL CONCRETE
(ES2145)



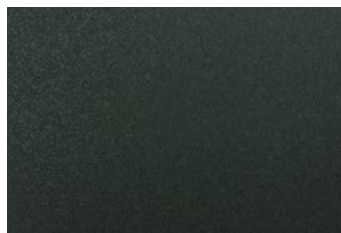
DESIGN URBAN CONCRETE
(ES2146)



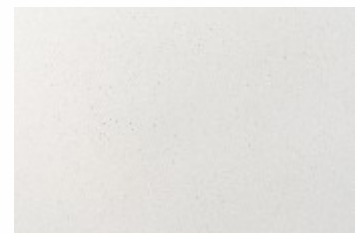
DESIGN ZINC PATINA
(ES2153)



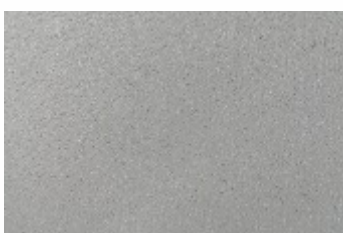
DESIGN COPPER PATINA
(ES2164)



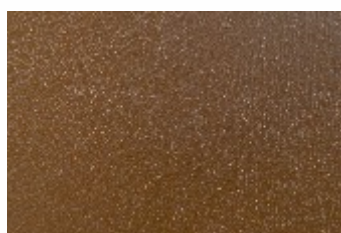
TEXTURED FINE GREEN BOTTLE MCD
(ES2102)



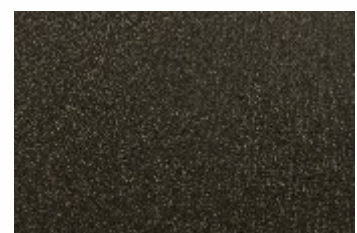
TEXTURED ROUGH COTTON
(ES2169)



TEXTURED ROUGH CLAY
(ES2165)

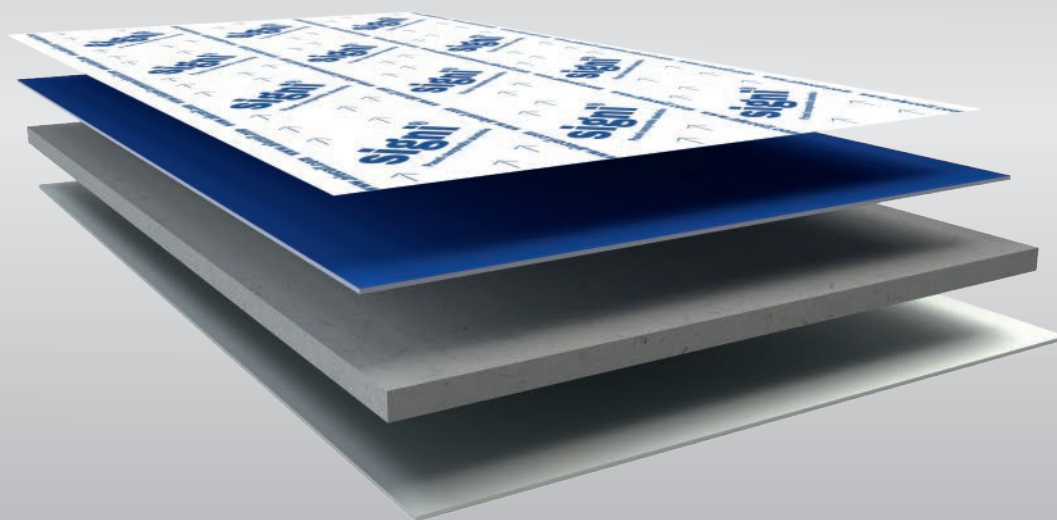


TEXTURED ROUGH SPICY
(ES2172)



TEXTURED ROUGH COCOA
(ES2171)

signi®



www.alucoil.com

Polígono Industrial de Bayas
C/ Ircio. Parcelas R72-77
09200 Miranda de Ebro, Burgos
SPAIN

Tel.: +34 947 333 320 Fax: +34 947 324 913
info@alucoil.com

Alucoil® S.A.U. reserves the right to change or remove information contained in this brochure without prior notice.
Please visit us at www.alucoil.com to check the latest version.


Alucoil®
Grupo Alibérico